



Worklist: 1540

<u>LAB CASE</u>	<u>ITEM</u>	<u>TASK ID</u>	<u>DESCRIPTION</u>
C2017-0226	1	76648	AM 3 Urine Carboxy-THC
C2017-0231	1	76649	AM 3 Urine Carboxy-THC
C2017-0252	1	76654	AM 3 Urine Carboxy-THC
C2017-0253	1	76653	AM 3 Urine Carboxy-THC
C2017-0260	1	76652	AM 3 Urine Carboxy-THC
M2017-0489	2	76651	AM 3 Urine Carboxy-THC
P2017-0232	2	76650	AM 3 Urine Carboxy-THC



Area Percent Report

Data Path : D:\DATA\2017\2-14-17 cTHC\
 Data File : 02301003.D
 Acq On : 14 Feb 2017 12:54
 Operator : Instrument 65198 - Tox
 Sample : brc3 control
 Misc : lot 68430; am 3
 ALS Vial : 23 Sample Multiplier: 1

Integration Parameters: autoint1.e
 Integrator: ChemStation

Method : D:\DATA\2016\852016a ta\psilocyn .D\TOXI-A 10115.M
 Title :

Signal : EIC Ion 371.00 (370.70 to 371.70): 02301003.D\data.ms

peak #	R.T. min	first scan	max scan	last scan	PK TY	peak height	corr. area	corr. % max.	% of total
1	3.898	10	22	30	BV	4399	72265	9.10%	7.801%
2	4.691	147	169	194	BB	41676	794420	100.00%	85.755%
3	4.906	198	209	221	BB	3174	59702	7.52%	6.445%

Sum of corrected areas: 926387

Signal : EIC Ion 473.00 (472.70 to 473.70): 02301003.D\data.ms

peak #	R.T. min	first scan	max scan	last scan	PK TY	peak height	corr. area	corr. % max.	% of total
1	4.693	146	169	192	BB	18375	375543	100.00%	57.865%
2	5.175	248	259	279	BB	12765	273454	72.82%	42.135%

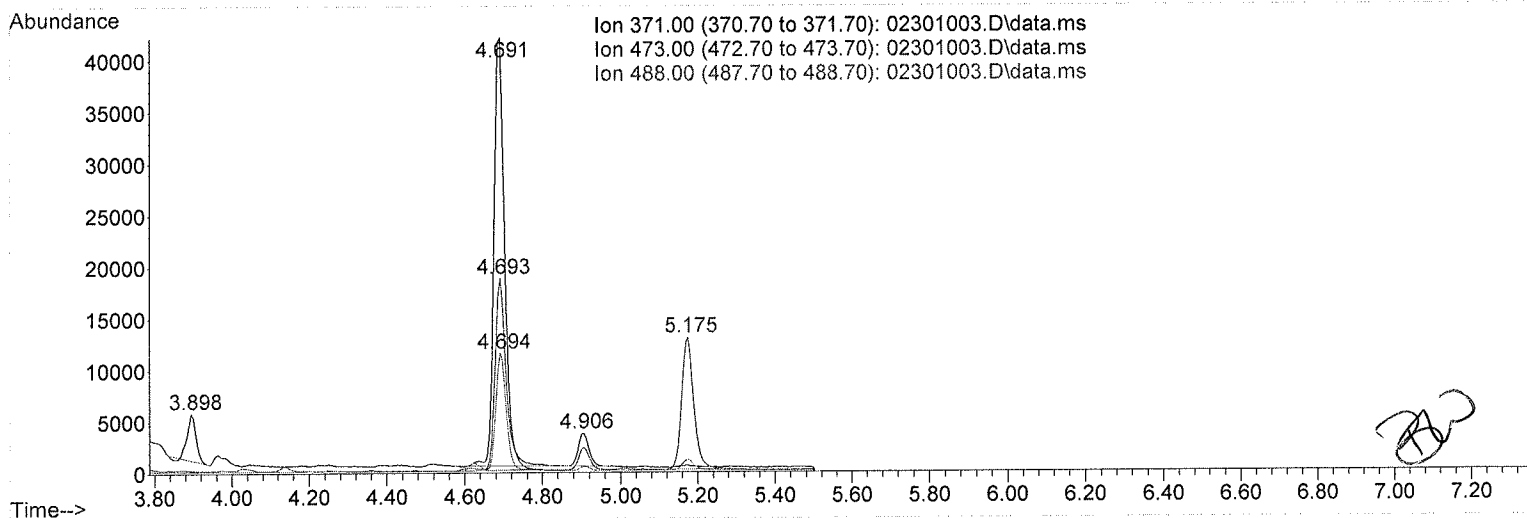
Sum of corrected areas: 648997

Signal : EIC Ion 488.00 (487.70 to 488.70): 02301003.D\data.ms

peak #	R.T. min	first scan	max scan	last scan	PK TY	peak height	corr. area	corr. % max.	% of total
1	4.694	163	170	185	VB	11255	206890	100.00%	100.000%

Sum of corrected areas: 206890

TOXI-A 10115.M Tue Feb 14 14:21:27 2017



Area Percent Report

Data Path : D:\DATA\2017\2-14-17 cTHC\
 Data File : 02201001.D
 Acq On : 14 Feb 2017 12:35
 Operator : Instrument 65198 - Tox
 Sample : negative control
 Misc : lot 12517; am 3
 ALS Vial : 22 Sample Multiplier: 1

Integration Parameters: autoint1.e
 Integrator: ChemStation

Method : D:\DATA\2016\852016a ta\psilocyn .D\TOXI-A 10115.M
 Title :

Signal : EIC Ion 371.00 (370.70 to 371.70): 02201001.D\data.ms

peak #	R.T. min	first scan	max scan	last scan	PK TY	peak height	corr. area	corr. % max.	% of total
1	3.821	3	7	18	BV 2	11796	174551	59.78%	19.357%
2	3.907	18	23	32	PV	21382	292000	100.00%	32.382%
3	3.989	32	39	48	PV	5615	92706	31.75%	10.281%
4	4.082	48	56	65	VV	7595	146534	50.18%	16.250%
5	4.430	112	120	135	VV 2	5438	125208	42.88%	13.885%
6	4.702	166	171	189	VB	3261	70742	24.23%	7.845%

Sum of corrected areas: 901741

Signal : EIC Ion 473.00 (472.70 to 473.70): 02201001.D\data.ms

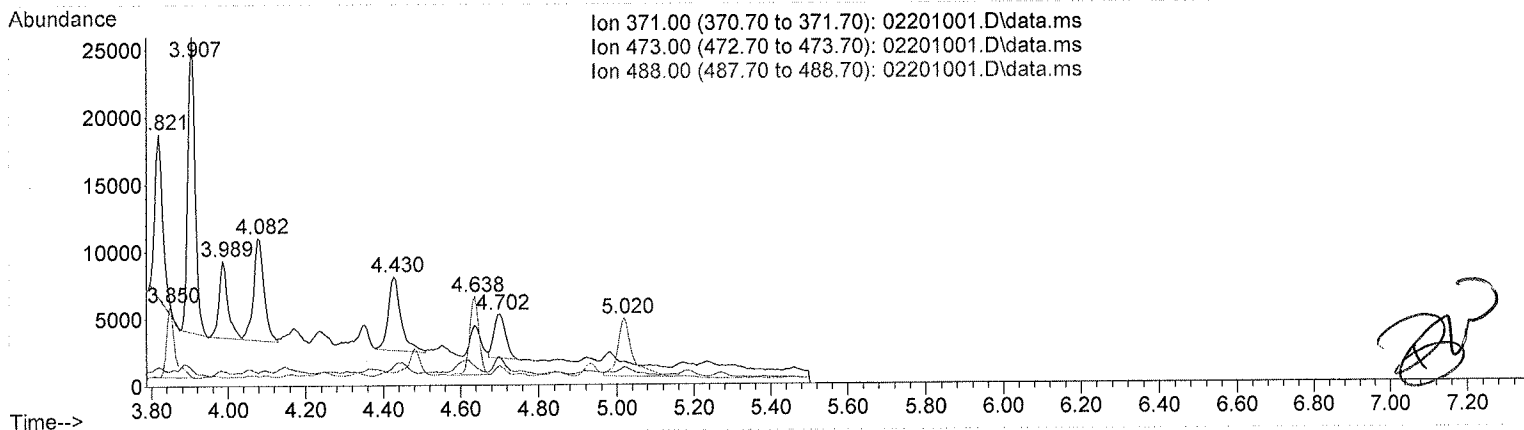
peak #	R.T. min	first scan	max scan	last scan	PK TY	peak height	corr. area	corr. % max.	% of total
No peaks were detected using the method integration parameters!									

Signal : EIC Ion 488.00 (487.70 to 488.70): 02201001.D\data.ms

peak #	R.T. min	first scan	max scan	last scan	PK TY	peak height	corr. area	corr. % max.	% of total
1	3.850	3	13	27	BV 2	5146	78643	66.55%	26.788%
2	4.638	148	159	166	BV 2	5756	96749	81.87%	32.956%
3	5.020	220	230	253	VB 2	4268	118179	100.00%	40.256%

Sum of corrected areas: 293571

TOXI-A 10115.M Tue Feb 14 14:21:14 2017



Ion 371.00 (370.70 to 371.70): 02201001.D\data.ms
 Ion 473.00 (472.70 to 473.70): 02201001.D\data.ms
 Ion 488.00 (487.70 to 488.70): 02201001.D\data.ms

Area Percent Report

Data Path : D:\DATA\2017\2-14-17 cTHC\
 Data File : 02101002.D
 Acq On : 14 Feb 2017 12:45
 Operator : Instrument 65198 - Tox
 Sample : positive control
 Misc : FE03121501 in neg lot 12517; am 3
 ALS Vial : 21 Sample Multiplier: 1

Integration Parameters: autoint1.e
 Integrator: ChemStation

Method : D:\DATA\2016\852016a ta\psilocyn .D\TOXI-A 10115.M
 Title :

Signal : EIC Ion 371.00 (370.70 to 371.70): 02101002.D\data.ms

peak #	R.T. min	first scan	max scan	last scan	PK TY	peak height	corr. area	corr. % max.	% of total
1	3.815	3	6	17	PH 2	12804	280166	71.53%	19.530%
2	3.901	17	22	30	VV	17175	285815	72.97%	19.924%
3	3.984	30	38	47	VV	5421	148432	37.90%	10.347%
4	4.076	47	55	64	VV	6801	182308	46.54%	12.709%
5	4.422	110	119	138	VV 3	4642	146103	37.30%	10.185%
6	4.692	163	169	188	VB	21399	<u>391689</u>	100.00%	27.305%

Sum of corrected areas: 1434513

Signal : EIC Ion 473.00 (472.70 to 473.70): 02101002.D\data.ms

peak #	R.T. min	first scan	max scan	last scan	PK TY	peak height	corr. area	corr. % max.	% of total
1	4.694	162	170	190	VB	9094	<u>167504</u>	100.00%	100.000%

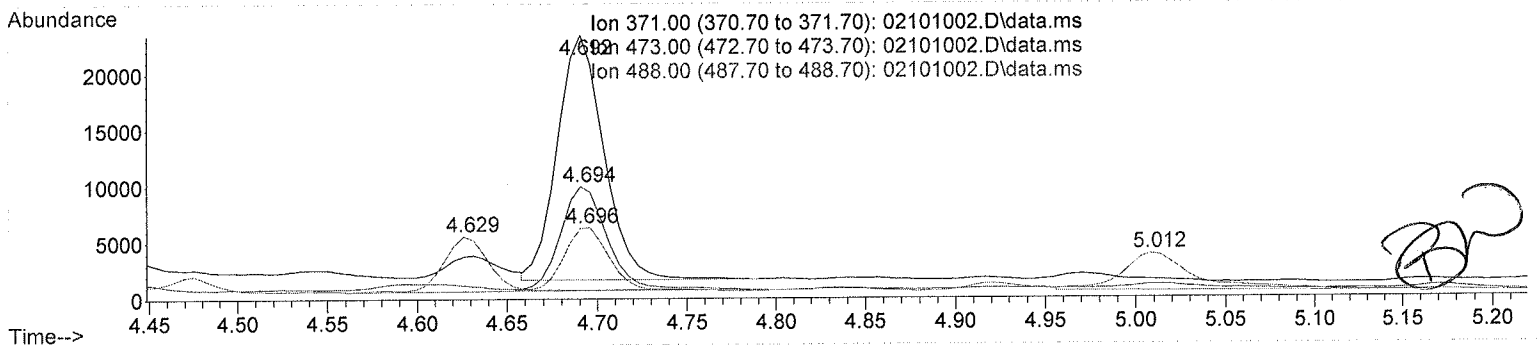
Sum of corrected areas: 167504

Signal : EIC Ion 488.00 (487.70 to 488.70): 02101002.D\data.ms

peak #	R.T. min	first scan	max scan	last scan	PK TY	peak height	corr. area	corr. % max.	% of total
1	3.845	6	12	25	BB 2	3607	59897	61.74%	18.035%
2	4.629	145	158	164	BV 2	4801	83589	86.16%	25.169%
3	4.696	164	170	182	VB	5618	<u>97014</u>	100.00%	29.211%
4	5.012	218	229	254	VB 2	3282	91610	94.43%	27.584%

Sum of corrected areas: 332109

TOXI-A 10115.M Tue Feb 14 14:22:31 2017



Area Percent Report

Data Path : D:\DATA\2017\2-14-17 cTHC\
 Data File : 02101020.D
 Acq On : 14 Feb 2017 15:32
 Operator : Instrument 65198 - Tox
 Sample : positive control
 Misc : FE03121501 in neg lot 12517; am 3
 ALS Vial : 21 Sample Multiplier: 1

Integration Parameters: autoint1.e
 Integrator: ChemStation

Method : D:\DATA\2016\852016a ta\psilocyn .D\TOXI-A 10115.M
 Title :

Signal : EIC Ion 371.00 (370.70 to 371.70): 02101020.D\data.ms

peak #	R.T. min	first scan	max scan	last scan	PK TY	peak height	corr. area	corr. % max.	% of total
1	3.811	3	6	16	BV 2	6131	76311	14.77%	6.422%
2	3.898	16	22	30	PV	25773	347887	67.34%	29.275%
3	3.979	30	37	46	PV	3259	59927	11.60%	5.043%
4	4.072	46	54	63	VV 3	5182	98776	19.12%	8.312%
5	4.417	111	118	131	PV 2	4647	88829	17.19%	7.475%
6	4.688	162	169	190	VB	27381	516628	100.00%	43.474%

Sum of corrected areas: 1188359

Signal : EIC Ion 473.00 (472.70 to 473.70): 02101020.D\data.ms

peak #	R.T. min	first scan	max scan	last scan	PK TY	peak height	corr. area	corr. % max.	% of total
1	4.690	159	169	191	BV	11747	225223	100.00%	100.000%

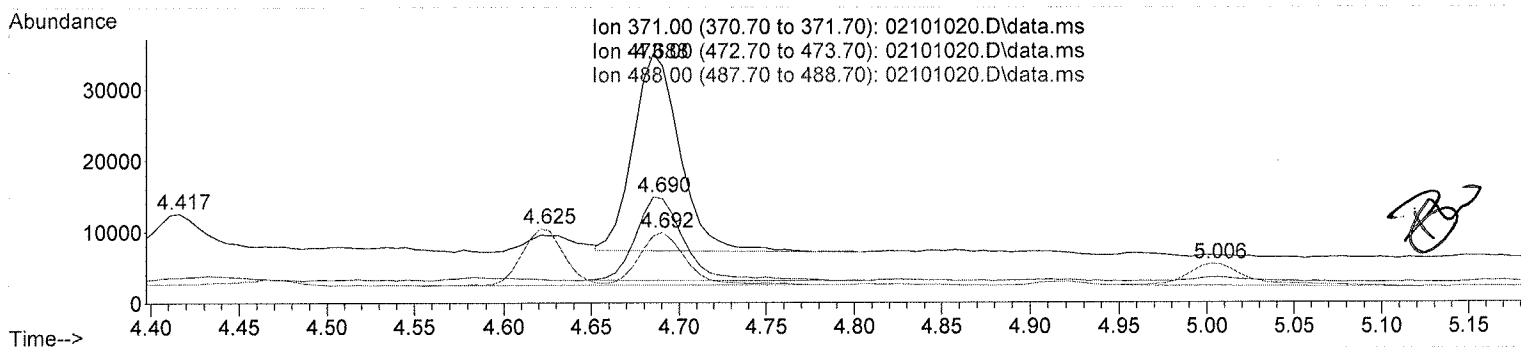
Sum of corrected areas: 225223

Signal : EIC Ion 488.00 (487.70 to 488.70): 02101020.D\data.ms

peak #	R.T. min	first scan	max scan	last scan	PK TY	peak height	corr. area	corr. % max.	% of total
1	3.842	3	11	30	BV 2	4117	71310	52.06%	17.154%
2	4.625	140	157	163	BV 2	7880	131199	95.78%	31.561%
3	4.692	163	169	187	VB	7300	136986	100.00%	32.953%
4	5.006	217	228	249	VB 2	3067	76210	55.63%	18.333%

Sum of corrected areas: 415706

TOXI-A 10115.M Tue Feb 14 15:42:00 2017



2.4.4 Carboxy-THC QC Calculations

Run Date: 2/14/2017

Case Calculations:

Lab Case #: BRC3-68430

EIC Ion 371 Corr. Area: 794420

EIC Ion 473 Corr. Area: 375543

EIC Ion 488 Corr. Area: 206890

473:371 Ratio: 0.473

488:371 Ratio: 0.260

Quality Control Calculations:

Retention Time acceptable range: 4.592 to 4.788

1st ctrl

2nd ctrl

EIC Ion 371 Corr. Area: 391689

516628

EIC Ion 473 Corr. Area: 167504

225223

EIC Ion 488 Corr. Area: 97014

136986

Approximate minimum corrected area of 371 ion: ~ 78338

Ratio of 473:371

<i>1st ctrl</i>	<u>0.428</u>	<i>2nd ctrl</i>	<u>0.436</u>	<i>avg.</i>	<u>0.432</u>
-----------------	--------------	-----------------	--------------	-------------	--------------

Accepted Range
(+/- 20%)

0.345 - 0.518

Ratio of 488:371

<i>1st ctrl</i>	<u>0.248</u>	<i>2nd ctrl</i>	<u>0.265</u>	<i>avg</i>	<u>0.256</u>
-----------------	--------------	-----------------	--------------	------------	--------------

Accepted Range
(+/- 20%):

0.205 - 0.308

Carboxy-calculation sheet
Revision 0 effective date 10/23/13
Issuing authority: Quality Manager

